

RNAV (GPS) RWY 36R

MEMPHIS INTL (MEM)

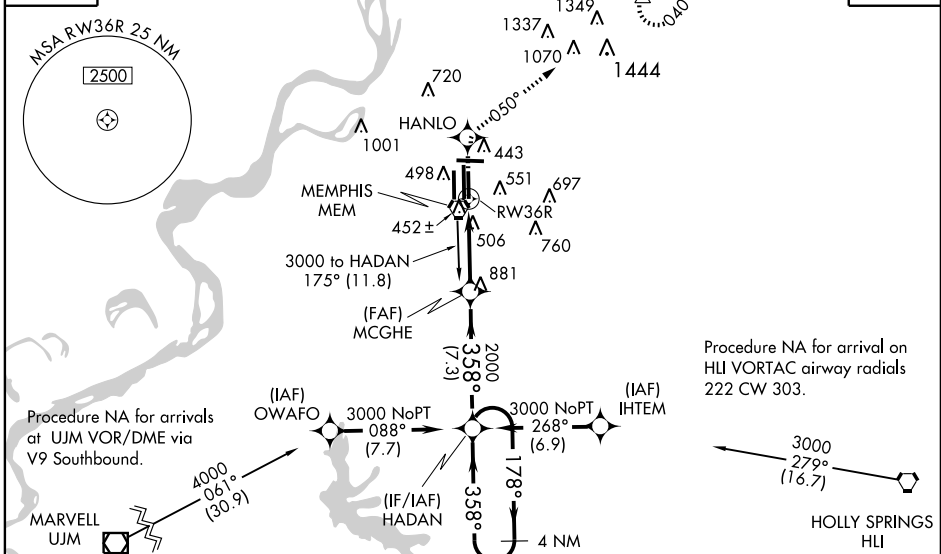
WAAS CH 49107 W36D	APP CRS 358°	Rwy Idg TDZE Apt Elev	9000 335 341
--	------------------------	-----------------------------	---

For inoperative ALSF, increase LPV all Cats. visibility to RVR 5000 and LNAV Cat. D visibility to RVR 6000. For uncompensated Baro-VNAV systems, LNAV/VNAV NA below -15°C (5°F) or above 48°C (118°F). DME/DME RNP-0.3 NA.

ALSF-2 MISSED APPROACH: Climb to 5000 direct HANLO and via 050° track to OROCU and hold, continue climb-in-hold to 5000.

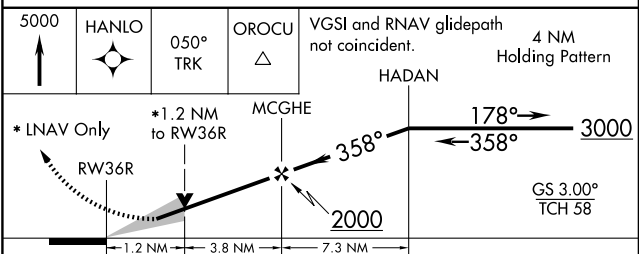
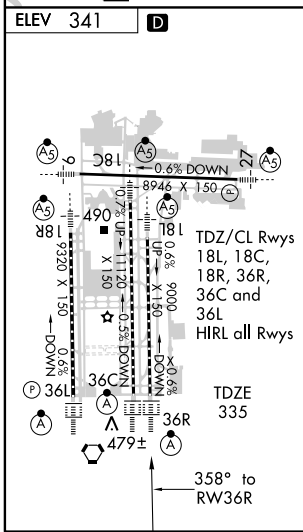
MEMPHIS APP CON 119.1 291.6 (176°-355°) 125.8 338.3 (356°-175°)	MEMPHIS TOWER (Rwy 9-27) 118.3 257.8 (Rwys 18C-36C, 18L-36R) 119.7 257.8 (Rwy 18R-36L) 128.425 257.8	GND CON (Rwy 9-27) 121.0 379.2 (Rwys 18C-36C, 18L-36R) 121.9 379.2 (Rwy 18R-36L) 121.65 379.2
---	--	---

ATIS 127.75	CINC DEL 125.2
-----------------------	--------------------------



SE-1, 20 NOV 2008 to 18 DEC 2008

SE-1, 20 NOV 2008 to 18 DEC 2008



CATEGORY	A	B	C	D
LPV DA		639/24	304 (300-1/2)	
LNAV/VNAV DA		729/40	394 (400-3/4)	
LNAV MDA	760/24	425 (500-1/2)	760/40 425 (500-3/4)	760/50 425 (500-1)
CIRCLING	800-1 459 (500-1)	920-1 579 (600-1)	920-1 1/2 579 (600-1 1/2)	920-2 579 (600-2)